



## PROK DEVICES PRIVATE LIMITED

B-80, 2<sup>nd</sup> & 3<sup>rd</sup> Floor, KSSIDC Industrial estate, 4<sup>th</sup> Main Road,  
6<sup>th</sup> Block, Rajaji Nagar, Bengaluru -560010

Ph no: 080-41480777, 080-41157700, Email: [enquiry@prokdvs.com](mailto:enquiry@prokdvs.com),  
[www.prokdvs.com](http://www.prokdvs.com), [www.prokdvs.in](http://www.prokdvs.in)


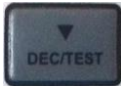
### SETTING PROCEDURE FOR FIELD SELECTABLE EFR 1A/5A

**Power up the EFR** - Connect the suitable Aux. supply to the P(+) & N (-) terminals of the EFR. i.e. (85-275VAC/DC)

The **Display** shows

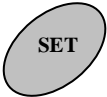
**Note:** In-5A or In-1A shows the relay rated current.

#### EFR Setting Procedure

Push the Increment  key, hold it and then push the  key.  
The Display shows

Push the  key or the Decrement  key to select the relay rated current In 1A/5A



or

Push the Set  key to save the relay rated current.


The Display now shows

**Note:** For 1A Rated current- setting range [.10-.8]  
For 5A Rated current- setting range [.05-.8]



Push the  key or the  key to select the PS value.





Push the  key to save the data.

**Note:** Range of PS [5% to 80%] at steps of 5%


Now the display shows



Push the  key or the  key to select the

MODE 1.DEF or IDMT ( MODE 2.NI, MODE 3. 1.3Sec, MODE 4. 3Sec, MODE 5. LTime).



Push the  key to save the Selected curve.


The Display now shows





Push the  key or the  key to select the TM value.



Push the  key to save the TM value.

**Note:** Range of TM [0.10 – 2.00] at steps of 0.05 (for IDMT curves)  
 Range of TM [0.10 – 20.0] Sec at steps of 0.10 (for Definite time)


The Display now shows



Depending on the relay Rated current.


**Relay Test**





Push the  key to test the output contacts of the relay and the LEDs.

The Display shows

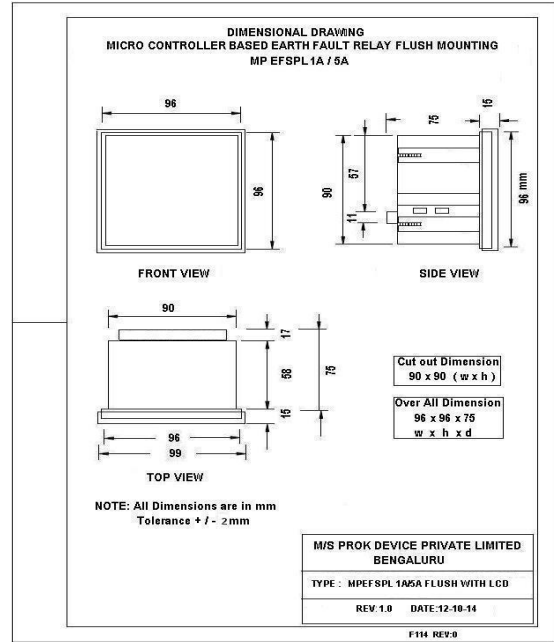
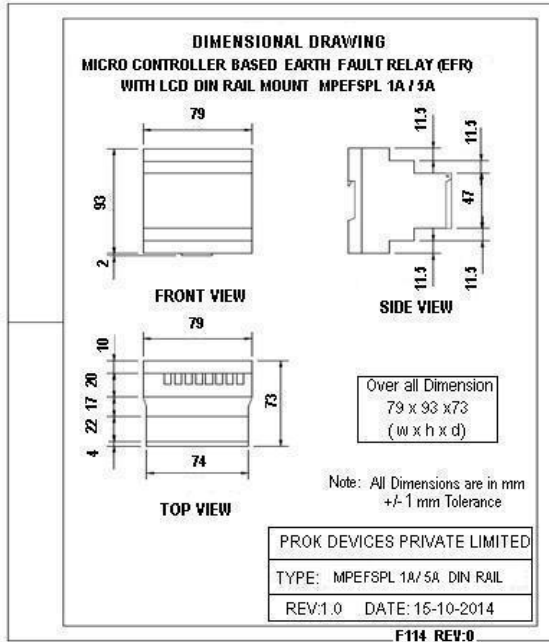


Press the  key to trip the relay. The relay trips and the LEDs glow.

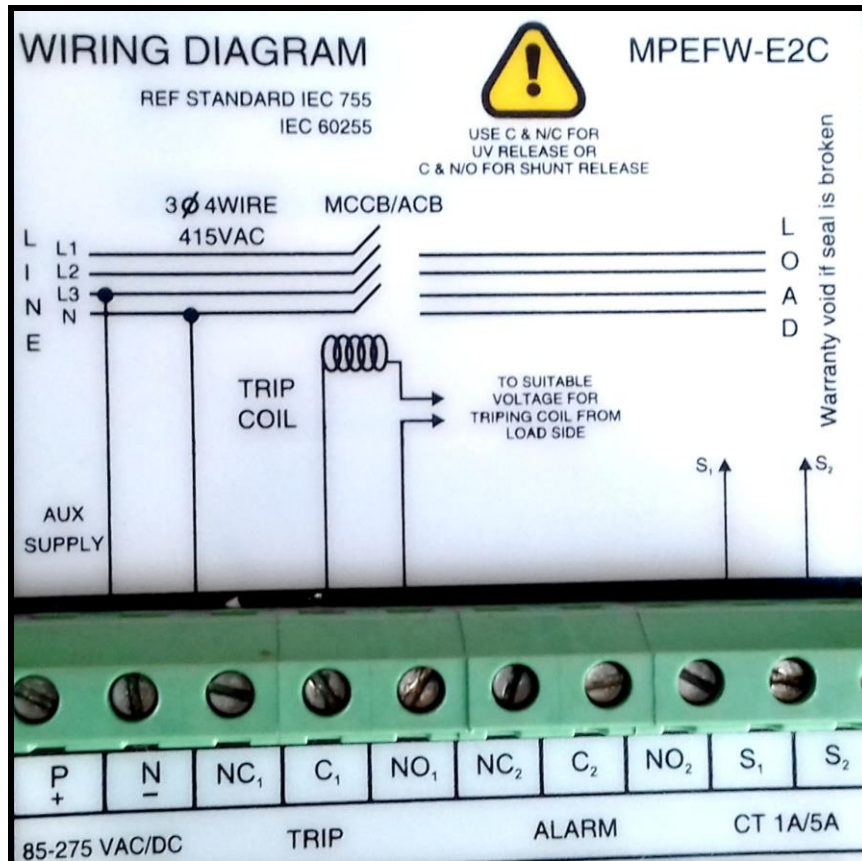


Push the decrement  or the  key to move out of it.

## DIMENSIONAL DETAILS



## WIRING DIAGRAM



## CONNECTION DIAGRAM

